



Release Notes for version 3.3

agileDSS Inc.
2013-01-31

Once again, agileWORKFLOW takes a leap from version 3.2 to 3.3. During this transition, a number of features have been added due to popular demand. We hope that this document, highlighting these key differences, will help inform your decision of whether or not to upgrade at this time.

Agent Windows Service Installation

The agileWORKFLOW agent now comes with a batch script for Windows called awf.service.bat. This interactive script supercedes the earlier scripts agent_service_delete.bat and agent_service_install.bat. This new script was designed internally to meet a requirement for easier installations without needing to go through the UI.

Upgrading Through the UI

Originally, upgrading a repository was done in a number of steps. One would export their workflow from the old version, run it through the migrator, and then import it back into the new version. However, this was time consuming. In order to streamline this process, the UI is now able to detect an older database and calculate the SQL statements required to bring it up-to-date, and even execute them for you.

No More Unused Views

The UI used to have unused monitor and instance views visible at startup. We decided to get rid of them. Both views can still be accessed through contextual menus throughout the application.

Example Connections

The connections.xml file which supplies the available connections found in the Repository Explorer has been updated, providing better examples than what existed in that file in the past.

In addition, the connection editor will now give an example URL after a driver is selected.

SQL Server Integrated Security

It is now possible to use Windows Authentication to connect to a MSSQL database with Integrated Security. Simply append the following to the jdbc url, without the quotes: “;integratedSecurity=true”. It is also important to verify that the agent is running with the user with which you wish to connect, and that that user also has access to the directories which agileWORKFLOW uses, including AWF_HOME and the agent’s installation directory.

UI Tweaks

A number of small tweaks were made to the user interface. The agent editor now explains that exactly one dispatcher may run at a time, the Import Calendar menu item is now associated to the Calendar item rather than the connection, a Collapse All button was added to the Repository Explorer, and error messages have been improved to provide us with more information, allowing us to correct defects faster.

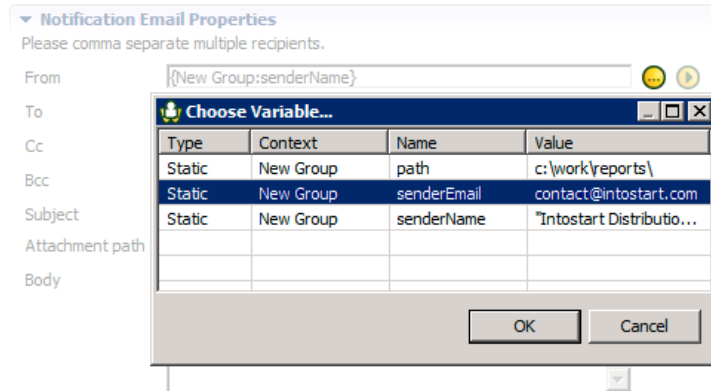
Business Objects Support

We continue to improve our support for Business Objects. In this release, there are two new additions. The configuration for XI 4.0 now has a timeout field, and the configuration for DS 4.0 allows the user to choose between Service Pack 2 and 3, each of which have their own implementations.

The image shows two configuration dialogs side-by-side. The left dialog is titled 'BOBJ XI 4.0 Configuration' and contains fields for Username, Password, CMS, Port, and Timeout (sec). The 'Timeout (sec)' field is set to 300 and is circled in red. Below the fields is a 'Test Configuration' button. The right dialog is titled 'BOBJ 4.0 DS Configuration' and contains fields for DS Version, Username, Password, CMS Name, Repo Name, Link Dir, and Job Server. The 'DS Version' dropdown menu is open, showing 'Service Pack 3' at the top, 'Service Pack 2 and earlier' in the middle, and 'Service Pack 3' at the bottom. The middle option is circled in red. Below the fields is a 'Test Configuration' button.

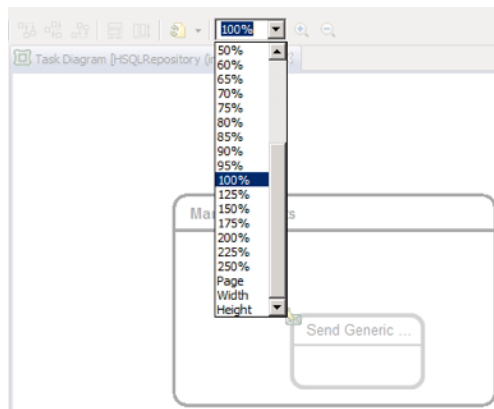
Variable Dialog

When giving a demo to one of our customers, they mentioned frustration in trying to track their variable names. Going to the drawing board, we decided we would create a dialog that would display all the available variables in the environment, such that you could select one and it would be inserted at the cursor location.



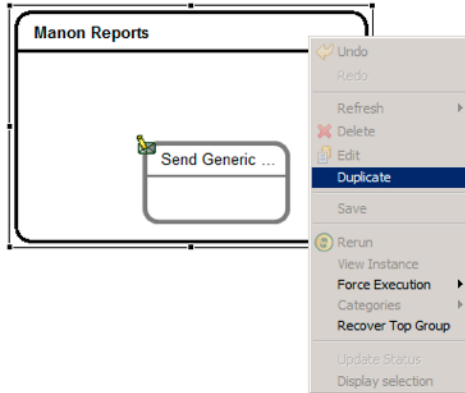
Diagram

The diagram editor has been improved in three ways. First, the palette is now visible by default, instead of being tucked away, which was admittedly counter intuitive. The tasks in the task diagram have also been given better mouse over tooltips, which provide information such as the instance's status and date, and the task's position and agent. What's more, a zoom with a finer scale has been added, allowing zoom out values of down to 1%.



Duplicate Now Cascades

Previously, if you duplicated a group, you could not expect its contents to be duplicated as well. Our product now has this functionality, making it easy to create a workflow in a group once as a kind of template and replicate again and again, tweaking each version for slightly different purposes.

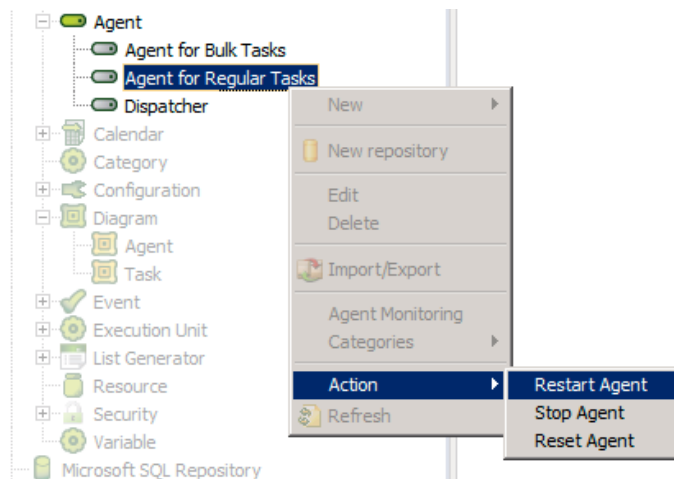


State Machine

With this release, our state machine is more robust. For example, if you try to force a task but its agent is not running, the UI will warn you. Also, the implementation of recover has been completed, meaning that if ever the workflow does find itself in an unrecoverable state, for example if BO appears to have a report perpetually scheduled that never gets executed, it is possible to fail the task and restart the workflow.

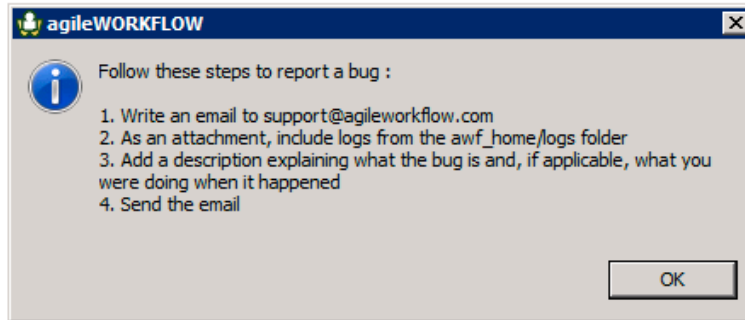
Agent

The agent will now be told to close immediately after the user requests it instead of waiting for the next beat. In addition, a menu item has been added to allow you to restart an agent, instead of needing to stop and then start it.



Bug Reporting

A simple dialog has been added to agileWORKFLOW which gives the instructions you need to follow if ever you encounter a bug in our product.



Windows Service Logs

To make the logs more manageable for performance, backup and resource management, the Windows service logs have begun being broken up into smaller files.

Conclusion

We hope that these features have whet your appetite, and we look forward to continuing to build great products that will allow you to do more.